



# Sterling HOMES

A QUALICO Company

## ELEVATIONS



COLONIAL



CONTEMPORARY ARTS & CRAFTS



CONTEMPORARY PRAIRIE



CRAFTSMAN



FARMHOUSE



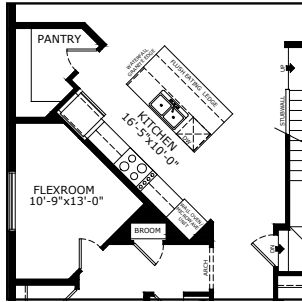
MODERN FARMHOUSE



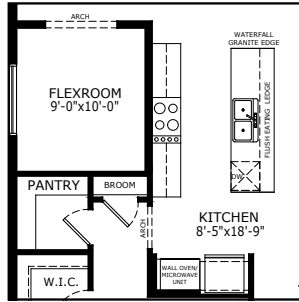
PRAIRIE

## MAIN FLOOR OPTIONS

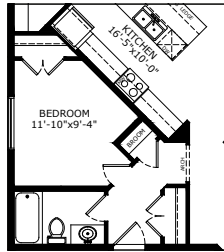
OPTIONAL EXECUTIVE KITCHEN



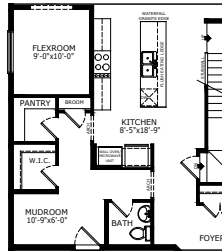
OPTIONAL MAIN FLOOR WITH EXECUTIVE KITCHEN



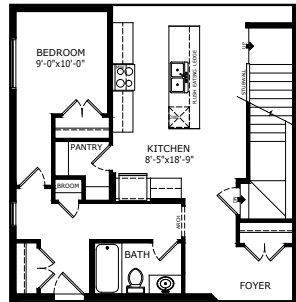
OPTIONAL FULL BATH WITH BEDROOM



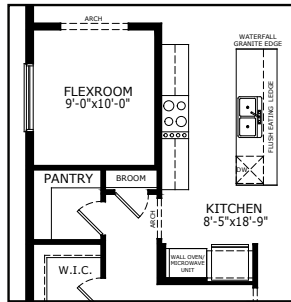
OPTIONAL KITCHEN



OPTIONAL KITCHEN & OPTIONAL FULL BATH WITH BEDROOM

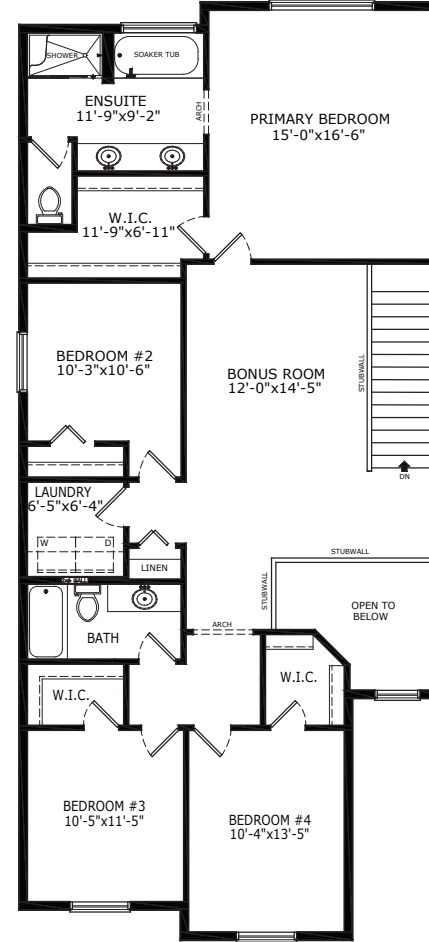


OPTIONAL KITCHEN WITH EXECUTIVE KITCHEN



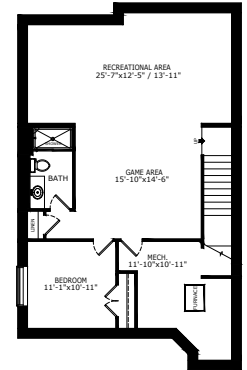
## UPPER FLOOR OPTIONS

OPTIONAL 4TH BEDROOM

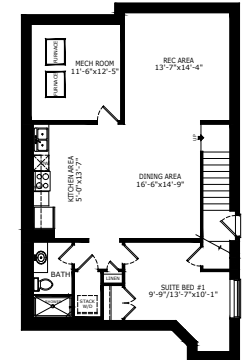


## BASEMENT OPTIONS

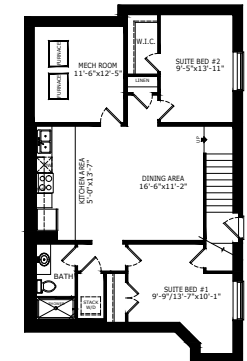
STANDARD 898 SQ FT



1 BEDROOM 'LEGAL SUITE' 876 SQ FT



1 BEDROOM 'LEGAL SUITE' 876 SQ FT



Scan here for floorplan options and more

\*Legal Suite availability varies by community and municipal regulations.

# Build Your Life

STERLINGCALGARY.COM